



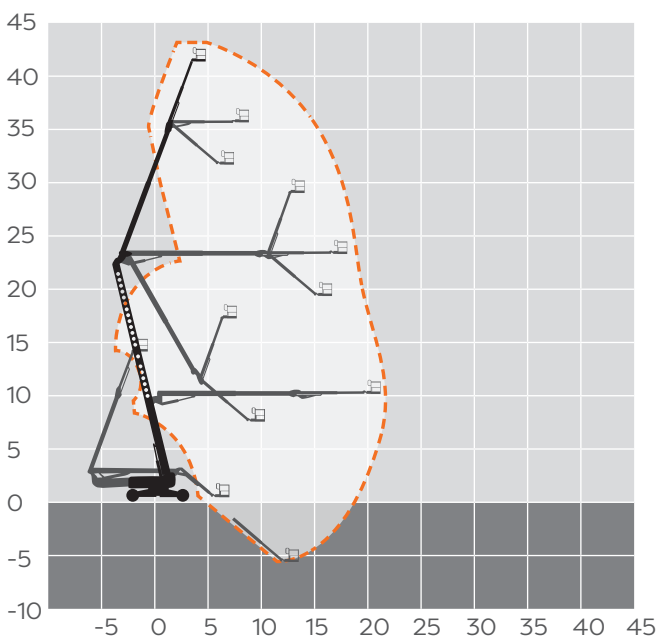
43m Diesel Articulating Boom

MACHINE SPECIFICATION SHEET

BA135DS

REACH HEIGHT	43.15m
PLATFORM HEIGHT	41.15m
CLOSED LENGTH	12.93m
CLOSED HEIGHT	3.07m
WHEELBASE	4.72m [†] /4.11m ^{††}
WIDTH	2.49m [†] /3.94m ^{††}
TURNING RADIUS	5.64m ^{††}
LIFTING CAPACITY	272kg
WEIGHT	20,693kg
ROTATION	360°
HORIZONTAL REACH	21.26m
CAGE DIMENSIONS	0.91x2.44m
IPAF CATEGORY	3b
POWER	DIESEL

FEATURED MODEL	GENIE G135D
ALTERNATIVE MODEL	GENIE G135DS*



These machines offer the following range of benefits:

- The Genie Z135/70 articulating boom lift delivers access to up, over and out
- Four-wheel drive with full-time positive traction means that this articulating boom can handle rough jobsite ground conditions with ease
- 180 degrees of horizontal maneuverability for added versatility and improved productivity
- Jib extends from 3.66 to 6.10m and provides a 110° vertical range of motion
- 360° continuous rotation turntable and 160° platform rotation for fast, easy positioning
- Four-wheel steer with front-wheel, rear-wheel, crab and coordinated steer options available to provide additional maneuverability

The information provided is for guidance only. It may change at any time in accordance with manufacturer's specification.

*Model not fitted with electronic secondary guarding. †Axles Retracted ††Axles Extended.